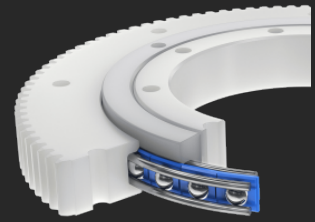


Bearing assemblies made of plastic (POM), toothed gear Type LVM



Franke LVM type bearing assemblies offer all the advantages of wire race bearing technology combined in a lightweight plastic housing with external toothing.

Description

Franke LVM type bearing assemblies are ready-to-install bearings with housing rings made of plastic (POM), integrated bearing elements and external toothing. Franke LVM are suitable for medium rotational speeds and accuracies. Designed as 4-point bearings, they absorb equally high loads from all directions and are insensitive to shocks and vibrations. LVM bearing assemblies are insensitive to environmental influences and can also be used in food technology and pharmacy.

PLEASE NOTE: Plastic bearing assemblies are available from quantities of >20 pieces. For smaller quantities, we offer you bearing assemblies with housing rings made from 3D printing. On request, also customised to your further design. We will be happy to advise you!

Properties

Smooth running	● ● ●
Resilience	● ● ●
Speed	● ● ●
Stiffness	● ●
Weight	● ● ● ● ● ●
Price	● ● ● ● ● ●

Technical data

Material

Inner/Outer ring: Polyoxymethylene (POM)

Ball races: Non corrosive Steel (1.4310)

Rolling elements: Non corrosive Steel

Cage: Polyamid (PA12)

Gearing

AT-10

Operating temperature

-10 °C to +80 °C, short-term up to +100 °C

Peripheral speed

Max. 4 m/s

Lubricant

Klüber UH1 14-151

Relubrication

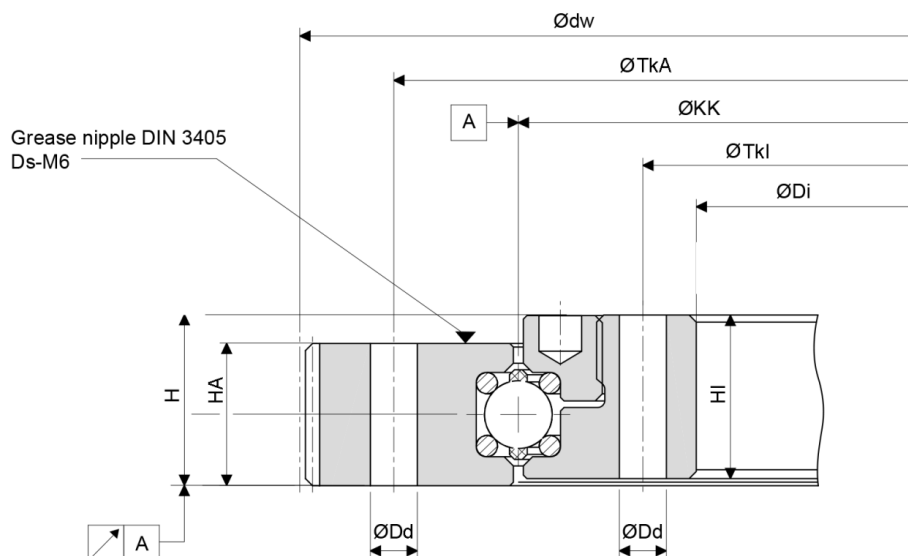
Via grease nipples to DIN 3405

Bearing assemblies made of plastic (POM), toothed gear Type LVM

Innovation in Motion



Data tables



LVM Table part 1

Name	KKØ mm	Dimensions mm								Attachment per ring
		Dd	Di ^{HB}	dw	H	HA	HI	TkA	Tkl	
LVM-0100	100	6,6	50	159,15	24	20	23	135	65	6x
LVM-0150	150	6,6	100	216,60	24	20	23	185	115	8x
LVM-0200	200	6,6	150	261,00	24	20	23	235	165	8x

LVM Table part 2

Name	KKØ mm	Load ratings kN					Stat. M. kNm	Effective circle diameter mm		Weight kg	Order no.	Delivery time*	
		C _{0a}	C _{0r}	C _a	C _r	C _{0m}		AT10	z				
LVM-0100	100	5,6	2,0	5,6	2,0	0,07		157,30	52	0,5	612953	on request	
LVM-0150	150	8,1	2,9	8,1	2,9	0,14		214,60	68	0,8	612357	on request	
LVM-0200	200	10,6	3,8	10,6	3,8	0,25		259,55	83	1,0	612359	on request	

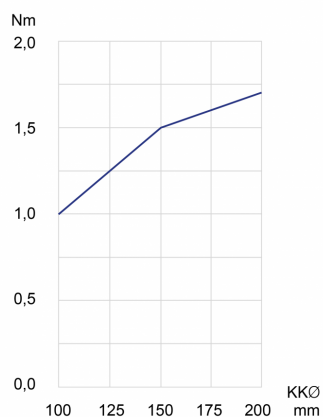
* Prices and delivery times are ex works Germany and are subject to change without notice. In other countries, prices and delivery times may vary due to different taxes, duties, charges and fees.
For actual sales prices and delivery conditions in your country, please contact our local representative.

Bearing assemblies made of plastic (POM), toothed gear Type LVM

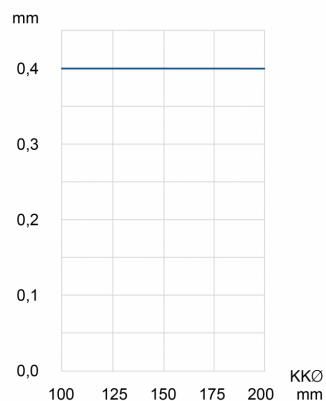
Innovation in Motion



Rotational resistance



Radial and axial runout accuracy



Contact

Franke GmbH
Obere Bahnstraße 64
73431 Aalen - Germany

Tel. +49 7361 920-0
Fax +49 7361 920-120
info@franke-gmbh.de

DIN EN ISO 9001 QM
DIN EN ISO 14001 QM

Created: 19.02.2025