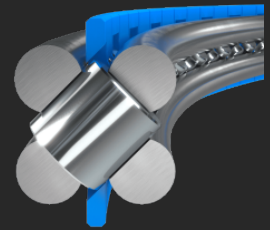


Crossed roller bearings with ground raceways Type LEW



Franke bearing elements of type LEW offer maximum rigidity with high running smoothness and accuracy.

Description

Franke bearing elements type LEW are suitable for medium rotational speeds and accuracies. They convince by smooth running even under tilt moment loads, high rigidity and compact installation space. The crosswise arranged rollers can support high loads from all directions. Bearing elements of model LEW are insensitive to shock and vibration. They offer the greatest possible flexibility in terms of preload, running characteristics and diameter ranges.

Properties

Smooth running	● ● ● ●
Accuracy	● ● ● ●
Speed	● ● ●
Stiffness	● ● ● ● ●
Assembly	● ●
Price	● ● ●

Technical data

Material

Ball race rings: hardened and tempered chrome-silicon steel
Rolling element: hardened rolling bearing steel
Cage: polyamide or thermoplastic polyurethane

Operating temperature

-30 °C to +80 °C, short-term up to +100 °C

Peripheral speed

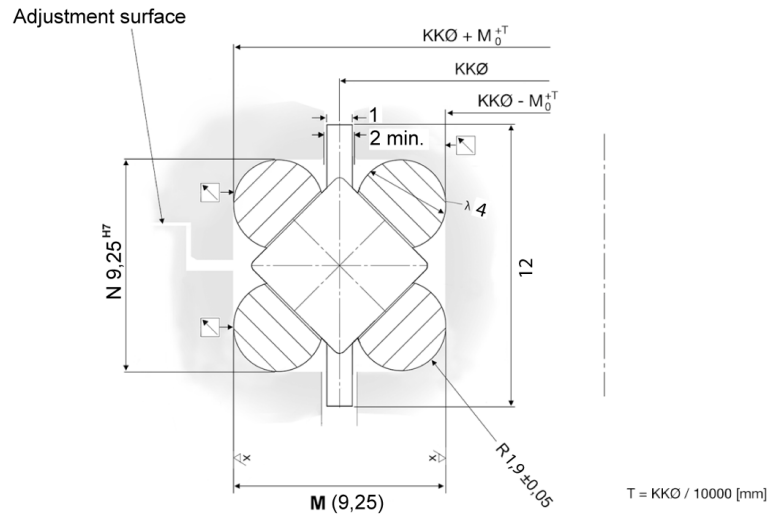
Max. 2 m/s

Lubricant

Shell Gadus S3 V220 C2

Crossed roller bearings with ground raceways Type LEW

Data tables

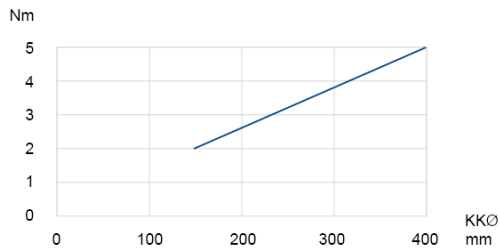


LEW 4 - M x N 9,25 x 9,25 mm

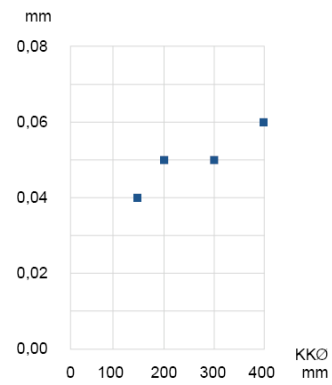
Name	KKØ mm	Load ratings kN				Weight kg	Order no.	Delivery time*
		C_{0a}	C_{0r}	C_a	C_r			
LEW4-0150	150	81	32	31	16	0,2	616029	up to 20 pcs. 4 weeks
LEW4-0200	200	109	44	37	20	0,3	616033	up to 20 pcs. 4 weeks
LEW4-0250	250	137	55	43	24	0,4	616034	up to 20 pcs. 4 weeks
LEW4-0300	300	165	66	49	28	0,4	616035	up to 20 pcs. 4 weeks
LEW4-0350	350	194	77	54	31	0,5	616037	up to 20 pcs. 4 weeks
LEW4-0400	400	222	89	60	34	0,6	616038	up to 20 pcs. 4 weeks

* Prices and delivery times are ex works Germany and are subject to change without notice. In other countries, prices and delivery times may vary due to different taxes, duties, charges and fees. For actual sales prices and delivery conditions in your country, please contact our local representative.

Rotational resistance



Radial and axial runout accuracy



Contact

Franke GmbH
Obere Bahnstraße 64
73431 Aalen - Germany

Tel. +49 7361 920-0
Fax +49 7361 920-120
info@franke-gmbh.de

DIN EN ISO 9001 QM
DIN EN ISO 14001 QM

Created: 17.02.2025